

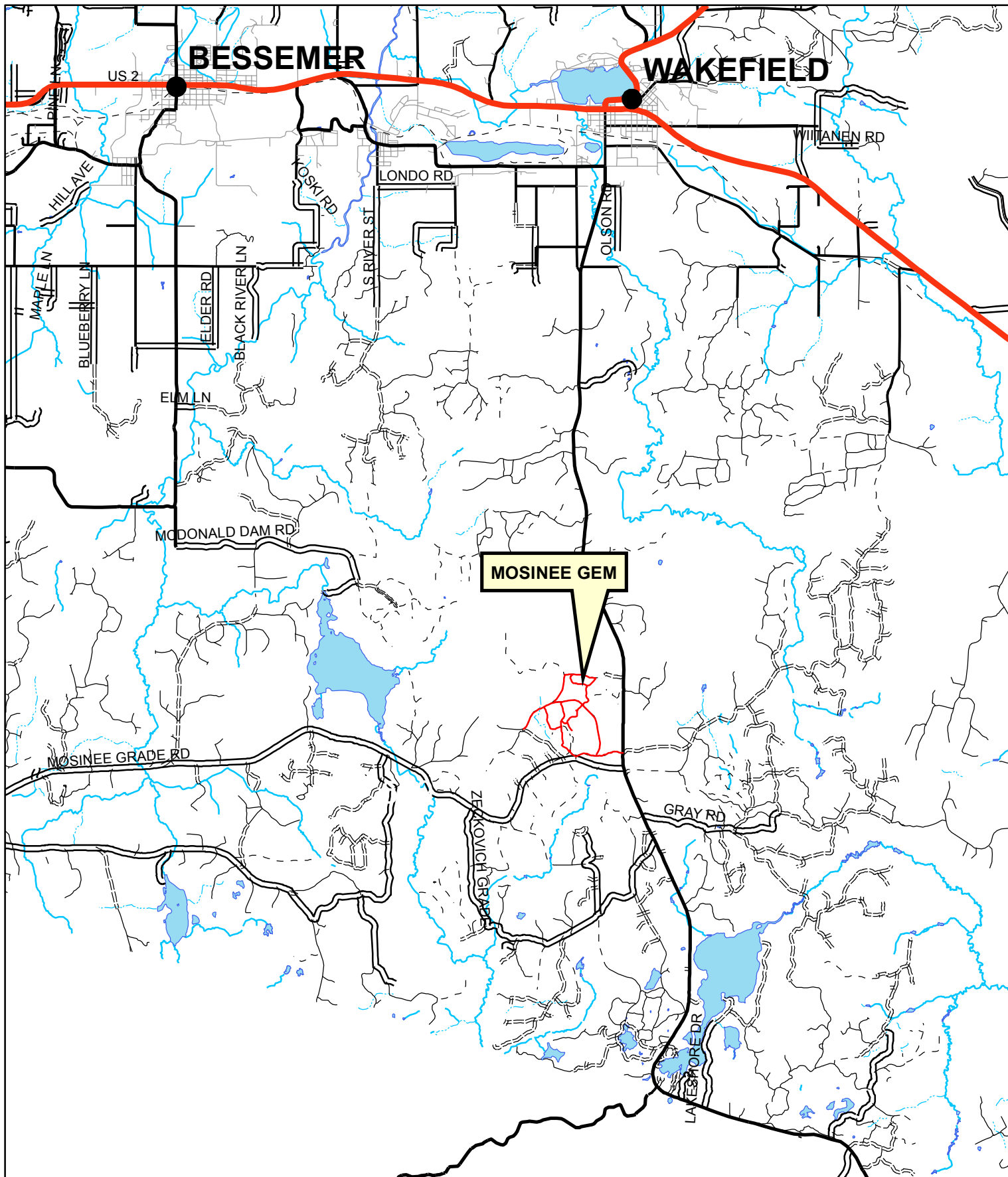
The Mosinee Grouse Enhanced Management System (GEMS)

The Mosinee Grouse Enhanced Management System (GEMS) is made up of a 1,136 acre tract of land located in the Mosinee Hunting and Recreation Area, part of the Gogebic county forest. This tract is currently managed for grouse, deer, and other wildlife habitat. The system is completely accessible to the public for hunting and contains a series of well-connected walking trails. The Mosinee GEMS consists of multi-aged aspen stands, northern hardwoods, conifer cover, and wildlife openings. Portions of the tract are part of an established deer wintering complex.

In recent management of the Mosinee GEMS, three wildlife openings were constructed in Fall 2015. These openings were cultivated and planted with a mixture of native perennials. Native shrubs were also planted around the perimeters of the openings to provide forage for grouse and deer. The openings and plantings provide forage to deer during the winter months and during fawn rearing and help to support fawn growth. For more information regarding Michigan GEMS you may access the Michigan Department of Natural Resources by clicking this link - https://www.michigan.gov/dnr/0,4570,7-350-79119_79147_81529_81531---,00.html



MOSINEE GEM (LOCATION)



Mosinee Grouse Enhanced Management System

